

A photograph of a man and a young child outdoors. The man, on the left, is smiling and looking towards the camera. He has short, dark, curly hair and is wearing a white shirt. The child, on the right, is laughing with eyes closed and mouth open, showing teeth. The child has dark, curly hair and is wearing a blue and white plaid shirt. The background is a bright, out-of-focus outdoor setting with greenery and a path. A teal diagonal banner is in the top right corner, and a grey diagonal banner is in the bottom left corner.

FISCAL YEAR 2017 ANNUAL REPORT

**Real Families,
Real Change**



Raphael
House

RAPHAEL HOUSE OF SAN FRANCISCO BOARD OF DIRECTORS, 2016-2017

BOARD OFFICERS

SCOTT OLSON

Chair of the Board of Directors
Shareholder
Vedder Price

CRAIG MARTIN

Board Vice Chair
Managing Partner
Morrison Foerster

PATRICIA KAMPMANN

Board Treasurer
VP, Professional Services &
Client Development
CrossCap Media Services

MELISSA KOERNER

Board Secretary
Co-Founder Bezels & Bytes

BOARD MEMBERS

PAUL BIANCHI

Market Leader
Senior Vice President
Bank of the West
Wealth Management Group

JUDY DAVIES

Vice President
Global Marketing Communications
Advantest Corporation

ELIZABETH DOLLAR

Partner
Foundations & Not-for-Profit Services
Moss Adams LLP

RALPH DRYBROUGH

Managing Partner
Fort Point Capital Partners

FRANK GUTIERREZ

Vice President, Business Applications
Genesys

ANDREW HEWLETT

Vice President
Harris Williams & Co.

MARNY HOMAN

Community Volunteer

LAURA LARSEN

Community Volunteer

LAURA MERLING

Strategic Advisor and
Business Consultant

THOMAS MILLER

Multi-Family Housing Developer
Community Activist

MICHAEL MILLMAN

Senior Vice President
Wealth Management Advisor
The Private Client Reserve
US Bank

TOM POSER

Executive Vice President
JLL

DUNCAN WELSTEAD

Finance Lead
Google Life Sciences

JAY WILLIAMS

Community Volunteer

MISSION STATEMENT

The mission of Raphael House is to help low-income families and families experiencing homelessness strengthen family bonds by achieving stable housing and financial independence.

DEAR FRIENDS,

For over 45 years, Raphael House has been a leader in the community providing necessary services to families experiencing homelessness or at risk for homelessness. In 2017, we continued to expand our successful service model, ensuring that our families are even better equipped to face the challenges in an increasingly competitive economic milieu.

This important work is a direct result of the generous support of our donors, compassionate and committed staff, dedicated volunteers, community stakeholders, and the guidance of our engaged Board of Directors. Our gratitude is immeasurable and we thank you for all that you have done to contribute to the success of our mission!

As we reflect on our achievements in 2017, we must also look to the future so that we can lay the foundation to continue helping our families on their road to self-sufficiency. Our Board of Directors has recently approved a new strategic plan for 2018-2021 that outlines our goals and objectives to meet the needs of the organization and the families we serve in the Bay Area community.

With the expansion of our support services, allowing us to guide and support families as they seek living wage employment and our family wellness initiative which addresses the mental health needs of our children and parents, the need to meet our expanded operating costs is increasingly important. We look to you, our supporters, to help us provide our families with the tools to succeed in a challenging environment.

This last year was filled with many accomplishments: from the parents who started on their career path as the cost of living continues to climb higher to the families that moved into their own home for the first time in many years, Raphael House remains a beacon of hope for hundreds of Bay Area parents and children. This past year we served 55 families in our Residential Shelter Program and 86% of them moved from our shelter into stable, permanent housing. The Bridge Program served 300 families with a host of safety net services that included ongoing case management, rental assistance, mental health counseling, and academic support for their children. Through participation in our Bridge Program, families stay connected to Raphael House, which allows them continued access to the tools and resources they need to break the cycle of generational poverty.

We also introduced our Education to Employment (E2E) initiative, which helps low-income families who have struggled with homelessness find a pathway to living wage employment, which in turn will help them maintain family stability and cohesion. E2E provides customized support structures for these workers with skills-based training begun in-shelter and continued off-site in partnership with employers and job training agencies. Several graduates of this initiative have already found employment and moved into their own home!

On behalf of each parent and child who received services this year or who participated in our programming, I thank everyone who has given of their time and resources. Together, we continue to provide Bay Area families who are experiencing homelessness with the personalized, family centered solutions they need to achieve stable housing and financial stability. We acknowledge that our accomplishments would not be possible without you and look forward to your continued commitment to helping us end family homelessness.

With deepest appreciation,



Ralph Payton
Executive Director



Scott Olson
Board Chairperson

**This past year we served
55 families in our Residential
Shelter Program and 86% of them
moved from our shelter into stable,
permanent housing. The Bridge
Program served 300 families with
a host of safety net services that
included ongoing case management,
rental assistance, mental health
counseling, and academic
support for their children.**

ABOUT RAPHAEL HOUSE

Since 1971, Raphael House has been at the forefront of providing Bay Area families experiencing or at risk of homelessness the personalized family-centered solutions they need to build brighter futures. Raphael House is the only privately funded program of its kind in the San Francisco Bay Area, and our success rate is unmatched: 86% of the families we serve go on to achieve long-term housing and financial independence.

With a spirit of warmth, compassion, and kindness at its core, Raphael House offers a broad community-focused continuum of services through its Residential Shelter and Bridge programs that have helped nearly 20,000 children and parents achieve stable housing and financial independence.

At Raphael House, we see homelessness as a temporary state that doesn't define a person. We understand that homelessness can result from unexpected circumstances, whether economic, health related, or because of a breakdown in family structure. We provide families an opportunity to take ownership of their futures and improve the quality of their lives through a nurturing and supportive process that emphasizes the importance of strong families and personal dignity.

Our model of providing a stable home-like shelter and offering ongoing, comprehensive assistance with housing and job placement, while supporting the emotional and social needs of parents and children alike, helps to empower more than 300 families each year.

Raphael House of San Francisco is a 501(c)(3) not-for-profit corporation.

**86% of the families
we serve go on to
achieve long-term
housing and financial
independence.**



RAPHAEL HOUSE HIGHLIGHTS FOR 2017



86% of Residential Families who exited the program moved into long-term stable housing

32 community partnerships were created to provide access to employment to Raphael House families

20,911 meals served

22,254 total number of nights families have stayed this fiscal year



92% of children receiving onsite tutoring services showed improved reading levels

289 families served with Bridge services



100% of children receiving academic support demonstrated improved performance within 12 months

97% of individuals receiving family wellness services demonstrated a level of progress towards their self-identified goals



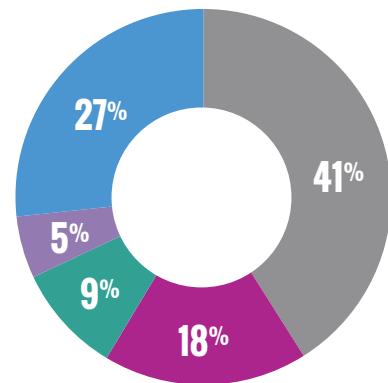
AUGUST 1, 2016-JULY 31, 2017 FINANCIAL REPORT

UNRESTRICTED REVENUES & SUPPORT

Individuals	\$737,058
Churches and Civic Groups	\$90,230
Foundation Grant	\$312,415
Corporations and Businesses	\$179,291
Trust/Estate Gifts	\$68,716
Total Contributions and Gifts	\$1,387,710
Special Events (net of special events expense)	\$593,925
In-kind Goods and Services	\$317,015
Other Revenues	\$180,860
Net Assets Released From Restrictions (including funding received from prior year)	\$901,965

TOTAL UNRESTRICTED REVENUES & SUPPORT FOR FISCAL YEAR 2017

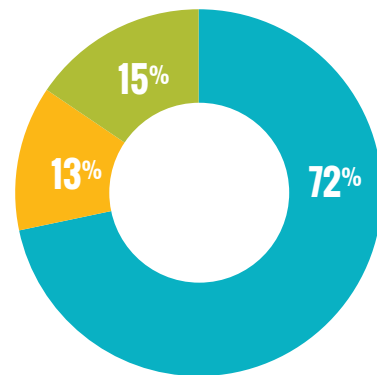
\$3,381,475



- Total Contributions and Gifts
- Special Events
- In-kind Goods and Services
- Net Assets Released From Restrictions
- Other Revenues

EXPENSES

Program Expenses	\$2,432,549
Management and General	\$433,225
Fundraising	\$526,779
TOTAL EXPENSES	\$3,392,553
Change in Unrestricted Net Assets	\$(11,078)



- Program Expenses
- Management and General
- Fundraising

This past year we served 55 families in our Residential Shelter Program, & 86% of them moved from our shelter into stable, permanent housing. The Bridge Program served 289 families with a host of safety net services.



OUR PROGRAMS

RESIDENTIAL SHELTER PROGRAM

Our warm and home-like residence offers families a dignified alternative to the typical emergency shelter experience by providing short-term housing in a safe, clean, and sober family-centered community. Families are able to heal as they get back on their feet while having access to a wide range of services that strengthen the whole family, empowering each individual as they work toward achieving long-term stable housing and financial independence.

Families with children under 18 or women in their third trimester of pregnancy are accepted based on their willingness to participate fully in our structured program.



RESIDENTIAL SHELTER SERVICES INCLUDE:

- 🏠 Private furnished rooms
- 🏠 Nutritious family-style meals
- 🏠 Intensive case management
- 🏠 Housing placement
- 🏠 Career development and job placement services
- 🏠 Community partner referrals
- 🏠 Mental health counseling
- 🏠 Life skills workshops in areas such as financial literacy, parenting, health, and emotional well-being
- 🏠 Children's programming
 - 🏠 K–12 academic tutoring and mentoring
 - 🏠 Scholarships for academic pursuits, extracurricular activities, and summer camp

OUR PROGRAMS BRIDGE PROGRAM

Once families transition from our Residential Shelter Program into stable housing, we are committed to helping them maintain their stability by supporting them with ongoing case management and the resources and connections they need to achieve financial independence and move toward a brighter future. Our Bridge Program serves all Raphael House families and offers an extended community where parents and children are able to empower and support each other.

Our Bridge Program is centered on the premise that housing is only the first step towards financial independence and stronger family bonds. Families begin a healing journey at Raphael House with the support of our counseling services, academic enrichment programs, and career development opportunities. The Bridge Program enables families to continue the progress they made while they were in-shelter, ensuring that Raphael House families continue their pathway to success.

BRIDGE PROGRAM SERVICES INCLUDE:

- 🏠 Intensive ongoing case management
- 🏠 Career development and job placement services
- 🏠 Community partner referrals
- 🏠 Mental health counseling
- 🏠 Children's services
- 🏠 K-12 academic tutoring and mentoring
- 🏠 Scholarships for academic pursuits, extracurricular activities, and summer camp
- 🏠 Family social activities and outings aimed at strengthening the family bond



STORIES FROM THE RAPHAEL HOUSE PROGRAMS

THE EDUCATION TO EMPLOYMENT INITIATIVE (E2E)

We are putting families on the path to a living-wage. Many of the family providers in Raphael House programs struggle to find living-wage jobs because they lack technology-based hard skills, modern workplace soft-skills, or training in specialized trades that will lead them down the path to living-wage employment. As housing costs continue to rise, we see many clients struggling to stay stably housed after leaving shelter when all that is available to them are minimum wage jobs. To address this challenge, Raphael House has developed a new program to help low-income job-seekers with families develop the skills to find employment with a family-sustaining living-wage: Education to Employment (E2E). E2E leverages our organizational aptitude at providing customized, high-touch, wrap-around support that homeless families require to succeed, combined with skills-based educational opportunities offered in partnership with job training agencies and employers. E2E starts with a holistic assessment process. Based on that assessment students are placed into one of three tracks:

INTRODUCTORY:
Basic computer & communication skills

INTERMEDIATE:
Coding and Service-as-Sales tools (like Salesforce and Zendesk) training, as well as workplace soft-skills.

PROFESSIONAL: Advanced training in technology or specialized trades

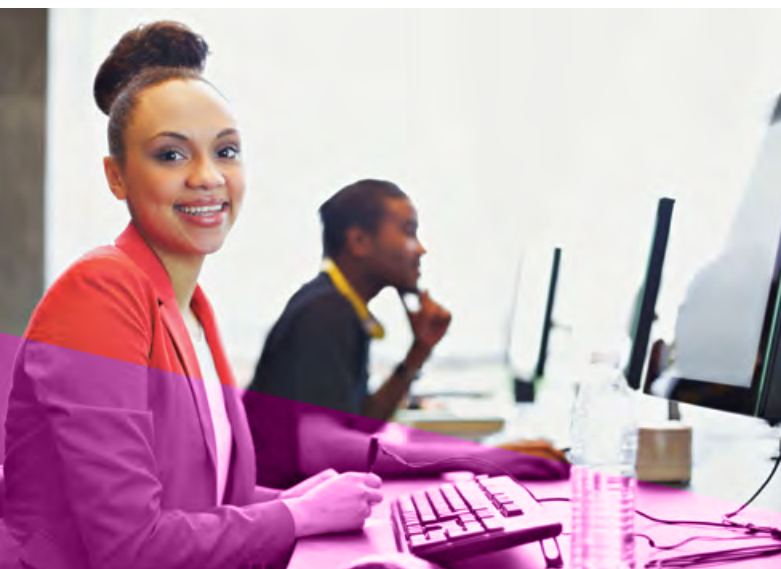
We piloted E2E in 2016-2017 with 23 E2E scholars. One of those was Gaudy, a Raphael House resident and single mother of two who found herself both jobless and homeless at the beginning of last year. Desperate to find employment so she would not lose custody of her children, she accepted a temporary minimum-wage landscaping position and moved into Raphael House.

With the support and encouragement of Raphael House staff, she applied to San Francisco's City Build Academy—a job training provider that prepares workers for union construction jobs.

We look forward to growing this program and leading more family providers down the path to a living wage.

Her acceptance into the program came toward the conclusion of her initial four month stay at Raphael House. She thought she would have to decline this opportunity because City Build Academy is a four-month program with a full-time schedule.

As part of the E2E program, we were able to offer Gaudy a six-month extension of her stay at Raphael House, thus providing housing, food, and the individualized support services she needed in order to complete her education courses successfully. We were also able to pay for the clothing and supplies. Gaudy concluded the City Build academy program and was hired at a union job paying \$24 per hour. Her strenuous work ethic, combined with the supportive opportunities provided by Raphael House's Education to Employment program will lead Gaudy to living-wage employment and a better future for her family. We look forward to growing this program and leading more family providers down the path to a living-wage.



RAPHAEL HOUSE EVENTS



2017 GOBBLE & GIVE: 1: Kids loved Clo the Cow from Clover Stornetta Farms, one of our 2017 Corporate Sponsors. **5:** Magicians and entertainers performed for the families who supported our wonderful fall fundraiser. **7:** The 2017 Gobble & Give Committee helped raise over \$60,000, our highest grossing family festival so far!

2017 GALA AT THE PALACE HOTEL: 2: The 2017 Gala Committee helped raise over \$751,000, our highest grossing gala ever! **3:** Revelers toasted to the fun evening of gourmet food, specialty cocktails, and dancing at the After Party. **4:** Over 600 guests celebrated Raphael House's success at the Palace Hotel. **6:** Guests dressed in their best black-tie to fete our theme "There's No Place Like Home".

AUGUST 1, 2016 - JULY 31, 2017 CORPORATE & COMMUNITY VOLUNTEER PARTNERS

Our highly interactive volunteer program gives individuals the opportunity to make a meaningful and lasting impact on the future of our parents and children, all while contributing to the improvement of our San Francisco community.

The diverse network of volunteers who support Raphael House each year are key to our success, providing us with the flexibility required to meet the changing needs of our community. Raphael House began as a volunteer-run organization. Today, virtually every aspect of life at Raphael House depends on the much needed support of volunteers. Whether preparing meals, tutoring children, serving on various committees, or tending to our rooftop garden. Raphael House involves the community in all aspects of helping our families build brighter futures.



Airbnb 🏠 Aramark 🏠 British American Business Council 🏠 Berman DeValerio 🏠 BrightFunnel 🏠 Calvary
🏠 Children of Shelters 🏠 Community Housing Partnership 🏠 Demandforce 🏠 Deutsche Bank 🏠
Dodge & Cox 🏠 Genesys 🏠 Google 🏠 Gyals Network 🏠 Gymboree 🏠 Hilton 🏠 Hotel Nikko SF 🏠 HSBC
🏠 Junior League of San Francisco 🏠 Key Club 🏠 LinkedIn 🏠 Lyft 🏠 Macquarie 🏠 Maverick Capital
Foundation 🏠 Miss California 🏠 Moss Adams 🏠 Murphy Pearson Bradley & Feeney 🏠 National Charity
League 🏠 National Charity League Golden Gate 🏠 Ogletree & Deakins 🏠 Paradigm Healthcare 🏠
PlanGrid 🏠 Random Acts 🏠 Riverbed 🏠 Rocket Fuel 🏠 Salesforce 🏠 San Francisco City
Football Club 🏠 Sephora 🏠 Service Corps 🏠 San Francisco Giants 🏠 University
of California Berkeley 🏠 St. John of God 🏠 St. Mary the Virgin 🏠
Supercell 🏠 Temple Emanu-El 🏠 The Princeton Club 🏠 Tokyo Bay
🏠 Tradeshift 🏠 Tumblr 🏠 Twitter 🏠 UpStart Talent
🏠 Vanderbilt 🏠 Vive Church 🏠 Wells Fargo 🏠
Wharton San Francisco 🏠 Woodruff-
Sawyer & Co. 🏠 Zitter Health
Insights 🏠

TOTAL
VOLUNTEERS: 1,831
TOTAL
VOLUNTEER HOURS: 11,182

RAPHAEL HOUSE VOLUNTEER HIGHLIGHTS

Birthday Parties

Once a month Raphael House hosts a birthday party for children in the Bridge Program celebrating a birthday that month. Cake and presents are donated and the parties are held on our rooftop, which is decorated for the occasion. Volunteers are integral in helping to decorate, wrap gifts, set up snacks, and help make the event a wonderful lasting memory for each child.

Corporate and Community Chefs

Each Monday and Thursday evening, volunteer groups of up to 6 people come to the Raphael House kitchen to help our chefs prepare and serve dinner. This is a unique opportunity to be part of the day-to-day life and traditions at Raphael House as well as a great team building opportunity!



Aramark

The joint Aramark, LifeWorks and British American Business Council Task Force held its 2017 "Aramark Building Community (ABC)" Day at Raphael House on September 20th. Over 60 volunteers tackled projects throughout Raphael House that had been in serious need of attention. In all, 19 spaces in the house were revitalized and the work done by volunteers accounted for over 430 hours of employee time! In addition, Aramark provides networking opportunities, pro bono services, and in kind donations.



RAPHAEL HOUSE WAYS TO GET INVOLVED

GROUP VOLUNTEER OPPORTUNITIES

- Prepare and serve dinner to our families during a Corporate and Community Chefs Night
- Keep Raphael House clean and organized by helping with a Shelter Upkeep Project

INDIVIDUAL VOLUNTEER OPPORTUNITIES

- Commit on a regular basis to help with elementary school or high school tutoring, children's program, toddler program, resume building, ESL tutoring, computer classes, etc.
- Contribute your time and expertise by providing professional services pro bono that benefit our families directly or Raphael House as a whole.

HOLIDAYS AND SPECIAL EVENTS

- Serve a holiday meal
- Adopt a family for the holidays
- Set up and decorate for birthday parties and family carnivals
- Assist with check-in or other day of logistics for our two largest fundraising events, Gobble & Give and our Annual Gala.

GIVE

- Make a donation / start a fundraising campaign
- Host a donation drive to collect some of our most needed items year-round
- See if your employer has a matching gifts program
- Include us in your planned giving or memorial gifts

LEARN MORE

raphaelhouse.org/volunteer/

CONTACT

Kellen Sarver

Volunteer and Administrative Coordinator

ksarver@raphaelhouse.org | 415.345.7265



Volunteers at our Holiday Decorating Event



Wetherby Asset Management



59 VOLUNTEERS COMMITTED
TO COME IN REGULARLY FOR A MINIMUM OF 6 MONTHS
TO WORK WITH RAPHAEL HOUSE CHILDREN AND PARENTS

AUGUST 1, 2016-JULY 31, 2017 DONOR HONOR ROLL*

ANGELS

\$100,000+

Institutions

George H. Sandy Foundation

PHILANTHROPISTS

\$50,000+

Institutions

Barney's New York, San Francisco
Brewster West Foundation
Calvary Presbyterian Church

Individual

Mrs. Lee Flynn

BENEFACTORS

\$25,000+

Institutions

Anonymous
Children of Shelters
Crescent Porter Hale Foundation
Deutsche Bank
Ethel & Joseph Spatz Foundation
Walter & Elise Haas Fund

Individuals

Anonymous
The Rev. & Mrs. Norman Cram
Ms. Barbara S. Hager
Mr. Craig Martin &
Ms. Karen Scarr
Ms. Laura Merling

PATRONS

\$10,000+

Institutions

Advantest
Audi of America, Inc.
Bank of America Charitable
Foundation
Bank of the West
Benificus Foundation
British-American Business
Council
Dodge & Cox
Google Matching Gift Program
Evelyn & Walter Haas, Jr. Fund
I & G Charitable Foundation
Kaiser Permanente
Macquarie Group Foundation
Ed & Betty Manoyan Foundation
The Morrison & Foerster
Foundation

PG&E Corporation Foundation
Qatalyst Partners
Serenity MedSpa
Time Inc - Instyle
Twitter, Inc.
US Bank

Individuals

Chris & Jennifer Brahm
Christina Cohen
Ms. Marcie Elias
Joannie & Evan Ericson
Josie & Brian Freckmann
Mr. & Mrs. Keith B. Geeslin
Marny & Andrew Homan
Mr. & Mrs. Richard H. Kimball
Jan Koerner & Melissa Koerner
Michael & Constance Laflamme
Michele Lee & Mr. Maco Stewart
Mr. Tom Miller, Jr.
Ms. & Mr. Margaret V. Sheehan
Terra & Erich Sollman
Mr. & Mrs. David Trujillo
Mr. Albert W. Wald

GUARDIANS

\$5,000+

Institutions

Alliance For Strong Families
& Communities
Apple Matching Gifts Program
Cooley LLP
DM3
First Tech Federal Credit Union
Genesys Telecommunications
Laboratories, Inc.
William G. Gilmore Foundation
Harris Williams-PNC Foundation
HSBC Philanthropic Programs
JEC Foundation
Joseph A. Jolson
Keker & Van Nest LLP
Lindsay & Alex Ramsay
Foundation
Maverick Capital Foundation
Nordstrom
Pacific Union
Perkins Coie Foundation
Plath & Co.
RINA Accounting Corporation
Sanguinetti Foundation
William E. Simon Foundation, Inc.
Simpson Thacher & Bartlett
SoftTech VC

The Episcopal Church of
St. Mary the Virgin
Union Bank
Wells Fargo Foundation

Individuals

Ms. Maureen Aggeler
Susan Atherton
Mr. & Mrs. Bob Buckley
Brett Bush and Kate Murphy
Mr. & Mrs. John Chiatello
Judy and Glyn Davies
Ms. Susan DiJohnson &
Mr. Henry Hodes
Mr. Ralph Drybrough
Mr. & Mrs. Joseph Gallo
Ms. Laurie Gill
Mr. Jean-Denis Greze
Mr. Frank Gutierrez
Ms. Heather R. Hanly &
Mr. Daniel Purcell
Mrs. Eileen H. Hinkson
Mr. & Mrs. John Hinman
Mr. Clarke Holland
Claire Hudson
Mrs. Lyn Isbell
Kate Keating
Ms. Rachel Khong
Niels & Susan Larsen
Laura & Sloan Larsen
Barbara & Tom LaTour
Mr. & Mrs. Mark X. Loughran
Ms. Alexandra Marchetti
Mr. & Mrs. Chuck Michaels
Mr. Thomas Miller &
Ms. Kathryn Keating
Ms. Molly O'Brien &
Mr. Michael Strand
Mr. & Mrs. Scott Olson
Wm. C. & Mary Carlos Pattison
Mr. Gary Read & Ms. Jody
Hickenbottom
Mr. Corbyn Salisbury
Mr. & Mrs. Charles Salter
Kate & Ted Smith
Sarah Smith
Mr. & Mrs. Claus Strand
Claudia & Nic Volpi
Ms. Anne M. Zucchi

SUSTAINERS

\$2,500+

Institutions

Unity Lutheran Church

The EACH Foundation
Sence Foundation
Salesforce.org Foundation
Eli & Mae Rosen Foundation, Inc.
R3 Builders
MZ Wallace
Kiton San Francisco LLP
Carl Gellert & Celia Berta
Gellert Foundation
Fort Point Capital
First Republic Bank
Malcolm Cravens Foundation
Cox Foundation
Clover Stornetta Farms
Clarence Heller Foundation
Bill Graham Supporting
Foundation
Aramark
AirBnB

Individuals

Mr. Michael Bien &
Ms. Jane Kahn
Ms. Leith Brooks Barry &
Mr. Stewart Barry
Mr. Brandon Bruce
Ms. Rebecca Chavez
Ms. Jocelyn Corbett
Mr. Brad Crawford
Victoria & Rick Dade
Todd Darling
Guillaume & Harriet de
Pracomtal
Elizabeth Dollar & Luke Dollar
Mr. & Mrs. William Duhamel
Christie Edwards
Stephanie Eggert
Mr. Jacques Fortier
Mr. & Mrs. Bruce Frey
Mr. Anthony C. Gilbert &
Mrs. Laurel W. Gilbert
Mr. Steven Gothelf &
Mr. Adam Gothelf
Ms. Patricia O. Haas
Mr. & Mrs. Tim Halloran
Noble & Lorraine Hancock
Family Fund
Mr. & Mrs. Joseph Harbison
Katherine & Lee Hicks
Ms. Amy Hockman &
Mr. Brian Bone
The Honorable James C. Hormel
Ms. Priscilla Hung
Mr. William J. Iracki

Mr. Thomas M. Kunz
 Sharon Lai
 Mr. & Mrs. Afsheen Lebastchi
 Local Independent Charities
 Erin Lumpkin
 David Massie
 Jennifer & Adam McDonough
 Jenny Moore
 Mr. Mark Neinberg & Ms.
 Jody Zaitlin
 Ms. Jerilyn Olson
 Mark F. Radcliffe
 Mr. Martin Romo & Ms.
 Leesa Miao
 Ms. Kimberly Shields
 Mr. & Mrs. Jeff Spaulding
 Mr. & Mrs. Mark Sugarman
 Ms. Beverly J. Sutton
 Mr. Lance W. Thomson
 Danny Turkovich
 Genevieve & Andrew Weeks
 Mr. Tony Weinress &
 Ms. Chris Kelly
 Brigitta & Markham Whiting
 Kendall Wilkinson
 Ms. Marcelene Wolford
 Peggy & Lee Zeigler

SPONSORS

\$1,000+

Institutions

Wilson Sonsini Goodrich &
 Rosati Foundation
 Wells Fargo
 United Way of Greater Atlanta
 Tinsley Hutson-Wiley
 Interior Design
 SunPower
 Robert K. & Barbara J. Straus
 Family Foundation
 SiliconANGLE Media Inc.
 Safeway Foundation
 PNC Foundation
 PG&E Corporation Foundation
 Matching Gifts
 Perkins Coie LLP
 Oshay Family Foundation
 Omidyar Networks
 Gordon & Betty Moore
 Foundation
 Matson Navigation Company, Inc.
 M57
 Lone Pine Capital
 Karol Uryga-Nawarowski
 Foundation
 Hotel Carlton
 Hilltop Foundation
 Hero Shop
 Hanson Bridgett, LLP

Group X, Inc.
 Glassybaby
 The Geomar Foundation, Inc.
 Genentech Employee Giving
 Program
 Bill & Melinda Gates Foundation
 Matching Gifts Program
 Frederic W. Cook & Co. Inc.
 Everest Waterproofing &
 Restoration, Inc.
 Dwell Family Foundation
 S.H. Cowell Foundation
 ChevronTexaco Employees'
 Campaign
 Bobac CFS Corp
 J. B. Berland Foundation

Individuals

Joseph & Ricki Akiwenzie
 Ms. Susie E. Albrecht
 & Mr. James O'Neil
 Mr. Randall Alifano
 Mr. & Mrs. Arthur Ang, Jr.
 Ms. Christine Angeles &
 Mr. Steven R. Cady
 Ms. Martha Angove
 Mr. & Mrs. Benton Armstrong
 Dennis Aukstik
 Maryam Barrett
 Alex & Lindsay Barza
 Ms. Annikka Berridge
 Mr. Paul Bianchi
 Ms. Judy A. Binsacca
 Matt Birnbaum
 Mr. Chad Bolick
 Mr. Michael Booth
 Ms. Arlene L. Boyd
 Ms. Kristin Bradbury &
 Mr. Eric Davison
 Peggy & Richard Burrows
 Mr. Jesse Butterfield
 Alston Calabrese
 Colleen Cassidy
 Mr. & Mrs. Edmund Cavagnaro
 Janet F. Chapman
 Dr. David Cohen, MD
 Cecily & Jaime Colmenares
 Dr. David L. Conant &
 Dr. Rebecca E. Conant
 Mrs. Barbara J. Conley
 Mr. & Mrs. Marc E. Cooper
 Mr. & Mrs. Paul Curthoys
 Ms. Lynn Davidian
 Mr. Matthew D. Davis &
 Ms. Karla Ellis-Davis
 Mr. J. Hallam Dawson &
 Dr. Mary McVey
 David DeJong
 Ms. Devin K. Dixon &
 Mr. Todd Schneider

Mrs. Mary Lou Dorking
 Mr. & Mrs. Charles Doyle
 Mr. & Mrs. Daniel L. Drake
 Mrs. Harold J. Dubay
 Ryan Dunn & Julie Dunn
 Josselyn & Matt Eccleston
 Paul & Asti Eisenstein
 Ms. Sari Ellovich
 Kelly Fair
 Mr. & Mrs. Seth P. Ferguson
 Mr. Ian Ferry
 Mr. Danny Field
 Barbara Figone
 Deirdre Findlay
 Mr. & Mrs. James Flournoy
 Ms. Shirley S. Forbes
 Mr. Andrew Francis
 Friends Of Kevin
 Ms. Kathleen M. Fung
 Chris Gallo & Jackie Gallo
 Mr. David Goldstein & Ms.
 Julia Vetromile
 Andrew Graham
 Ms. Brittany Haines
 Mr. & Mrs. Peter V. Hall
 Par Hanji
 Amber & Kevin Hanlin-Rowney
 Mr. & Mrs. Alex Hartigan
 Greg & Sally Hartman
 Dr. Christine L. Hejinian
 Mrs. Helen M. Heller
 Mr. Matthew Henry
 Mr. Andrew Hewlett
 Kirby & Nielma Hock
 Jeffrey & Jennifer Hom
 Michael Hoy
 Mr. Eric Hudson
 Kristin Hudson
 Spencer Hugret &
 Lauren Johnston
 Mr. & Mrs. Eugene J. Hwan
 John & Ann Iannuccillo
 Ms. Lois Anne Indorf
 Mr. & Mrs. Herrick Jackson
 Ms. Maggie Jacobs
 Ms. Jill B. Jardine
 Mr. Samuel Judd
 Mrs. Jacqueline D. Kaddah
 Dr. & Mrs. George Kalousek
 Ms. Karen Keeney
 Elizabeth Kiehn
 John King
 Mr. Paul L. King
 Erica Ko
 Ms. Carole R. Kornblum
 Ms. Barbara Korp
 Mrs. Katherine Kriken
 Maria Laguarda
 Ms. Robyn Lamar
 Harriet & Guillaume Lardeux

Ben & Kelley Lazzareschi
 Mr. & Mrs. Kenneth A. Lewis
 Ms. Kathy Long
 Ms. Sara Maatta
 Mr. & Mrs. Marco Magnano
 Ms. Barbara Malina &
 Mr. Scott Wachter
 Ms. Maura Mana
 Kiley & Oliver Mar
 Mr. Lawrence Marshall
 Mr. & Mrs. Greg Martin
 Ruthanne & Donald McCunn
 Mr. & Mrs. Kenneth Meislin
 Mr. & Mrs. Jonathan Meyer
 Ms. Marion G. Miles
 Mr. Shermann Min
 Jessica & Jason Moment
 Amanda Moore
 Mr. & Ms. Steven Moore
 Eric Mori
 Mr. Fergus Moroney
 Susan Mozayani
 Ted Murphy
 Ann Myers
 Megan & Markus Neubrand
 Ms. Monica Newton
 Mr. & Mrs. Frank B. Noonan
 Nancy O'Brien
 Ms. Rudelle O'Neal
 Sundeep Patel
 Michelle Payne
 Mr. Harry Plant & Ms. Amy Rao
 Andrew Pope
 Mr. William Primoizic
 Mr. Nicholas Reavill
 Mr. & Mrs. Philip D. Reed, III
 Foster De Reitzes
 Julie & Christopher Ridley
 Ms. Ursula Rolfe & Mr.
 Monroe Strickberger
 Mr. Terry L. Roller
 Claudia Castillo & Keith Ross
 Mr. Francis M. Rotella
 William & Stephanie Ryder
 Mr. & Mrs. Taylor Safford
 Ms. Lindsay Sanders
 Mr. & Mrs. Austin Schell
 Rehka Schipper
 Mr. & Mrs. William W. Schwarzer
 Stephen & Joanna Seelbach
 Mr. & Mrs. Paul Segre
 Josh Shaskan & Lisa Shaskan
 Mr. Edward M. Shultz
 Uma Sinha
 Ms. Holly Sorkin
 Marc Spencer
 Mr. & Mrs. Jim Squires
 John Stares
 Charles & Carla Stedwell
 Ms. Sandra L. Stumbaugh

Ms. Elizabeth L. Taggart
 Scott Taylor
 Philip & Karen Thomas
 Mr. David F. Thompson
 Dr. & Mrs. George Tischenko
 Ms. Tara Trask
 Mr. Roger Trincherio
 Mr. Jacques Vidrine
 Mr. Stephen S. Ward
 Mr. Kory William Warr
 Ms. Anne E. Waters &
 Mr. Stephen Buffi
 Vanessa & Duncan Welstead
 Amy E. Wender-Hoch
 Lauren Westfall
 Joan R. Wheelwright, M.D.
 Ms. Clare G. Willis
 Mrs. Diane B. Wilsey
 Ms. Muriel F. Wilson
 Mrs. Kathy Woeber Gardner
 Mary & Michael Wolfe
 Sheryl Wong
 Anna Yuan
 Shuyi Zhang

FRIENDS

\$500.00+

Institutions

TuTu School
 The Swig Foundation
 National Charity League
 San Francisco Chapter
 JPMorgan Chase - Matching Gift
 Program
 Johnson & Johnson Matching
 Gift Program
 India Hicks
 Herbert & Gertrude Halverstadt
 Foundation
 Friends & Alumni of the
 Open Classroom
 Davis Wright Tremaine LLP
 Consumer Business Professionals
 of San Francisco
 Callan Associates
 AT&T Services Inc.

Individuals

Samira Abrams
 Mr. Owen Allen
 Mr. Thomas E. Allen &
 Ms. Beth Levison
 Timur Alperovich
 Ms. Evi Altschuler
 Ms. Katharine D. Anderson
 Ms. Katherine L. Armstrong
 Ms. Elisha Atkins
 Jennifer & Ethan Ayer
 Mr. John Bahnken
 Ms. Lizanne Baldauf

Mr. Arnold V. Becker
 Ms. Natanya Bednarski
 & Mr. Gregory Johnson
 Mr. & Mrs. Walter C. Bell
 Mr. & Mrs. Mark Bennett
 Ellie Bingham
 Martha Boero
 Ms. Annette M. Breingan &
 Mr. Robert T. White
 Caroline Brinckerhoff
 Chris Brown
 Ms. Sheila M. Brown
 Tamarah Buckley
 Mr. Felipe Canacho
 Mrs. Judith A. Canepa
 Greta Carlstrom
 Ms. Grace Carter
 Mr. Harry R. Chesley
 Mr. Zachary Cincotta
 Mr. & Mrs. Matt Cline
 Mr. & Mrs. Kevin Clugage
 Ms. Katherine E. Coleman
 Mr. Thomas B. Cook &
 Ms. Anna Owens
 Kevin Corbett
 David & Claudia Crittenden
 Ms. Holly Cuggino
 Dr. Janice A. Culpepper
 Mr. & Mrs. Serge De la Porte
 des Vaux
 Luna DeAnna
 Mr. Drew Denbo
 Ms. Heather Deugan
 Ms. Ludell Deutscher
 Mr. & Mrs. David B. Devine
 Mr. & Mrs. Theodore Dimitre
 Carol & Steven Dimmick
 Rob Dimsdale-Zucker
 Mr. Joseph P. Ellin
 & Ms. Jacqueline Aiken
 Ms. Janice Elvee
 Lillian & Cobie Everdell
 Mrs. Stephanie Favaloro-Elliot
 & Mr. Simon Elliot
 Mr. George Fisher
 Mr. Jeffrey D. Foote
 Mr. Jeffrey Fraenkel
 & Ms. Frish Brandt
 Ms. Deborah G. Frangquist
 Stephanie Freeman
 Ms. Thomma Friedemann
 Ms. Gretchen Gardner
 Chris Garrity
 Tatum & Alex Getty
 Robyn & Frank Ghali
 Mr. & Mrs. Michael Giuntoli
 Mr. Joe Manley Gnanasekaran
 Lyn Gordon
 Mr. & Mrs. Christopher Gottschalk
 Ms. Jacqueline Green

Dr. & Mrs. Roger L. Greenberg
 Barry B. Grossman, PhD
 Mr. & Mrs. Scott P. Gutterman
 Mr. Steven Guttmann &
 Ms. Rhonda Kaufman
 Kevin Haas
 Mr. & Mrs. Peter Haas, Jr.
 Ms. Pamela Hamrick
 Peter & Harriet Hanauer
 Ms. Lori Hanninen
 Mr. & Mrs. Willard James Hannon, Jr.
 Josh & Liz Hanson
 Ms. Barbara E. Harms
 Mr. Nathan E. Hennings
 Ms. Susan I. Herzig
 Dan Holligan
 Ms. Louisa Holzschuher Roza
 Dr. & Mrs. Lawrence C. Horowitz
 Mr. & Mrs. Jerome Hosken
 Miss Carolee Houser
 Michelle Windisch Hughes
 Ms. Kimberly Hughes
 Mr. Michael J. Hughes
 Ms. Marian O. Ivan
 Dr. & Mrs. Howard S. Jaffe
 Mr. Jay Jeffers & Mr. Michael Purdy
 Carol Jillson
 Ms. Margaret E. Johnson
 Mrs. Margaret H. Johnson
 Kelly Jones
 Scott Kahn
 Barbara & Ron Kaufman
 Daniel Keeton
 Thomas Kiehne
 Ms. Delores Knipp
 Ms. Claire Knollys
 Ms. Orna Konig
 Mr. Milan Kovac
 Mr. Nathaniel Krasnoff
 Ms. Lisa A. Krekorian
 Aimee LaFont Leifer
 & Tjarko Leifer
 Ms. Maureen Laney &
 Mr. Dan Clarke
 Mr. & Mrs. Paul L. Larsen
 Mr. & Mrs. Richard E. Laws
 Mr. Craig Lawson
 Dina & Gordon Lee
 Ms. Wendy Lee
 Mr. & Mrs. Jerry Levine
 Dr. & Mrs. Jay A. Levy
 Gem Logan
 Cathryn Lyman
 Mr. & Mrs. James E. MacFarlan
 Mrs. Rebecca MacKenzie
 Ms. Carmen Maldonado
 Mr. Peter L. Mangione &
 Ms. Margaret M. Sabo
 Ms. Marjorie Mansouri
 Maria Markov

Mr. & Mrs. Rich McCandless
 Ms. Keri McCarthy Ferry
 Dr. Brigid McCaw &
 Mr. William Finzer
 Mr. Thomas McConnell &
 Ms. Latricia Turner
 Ms. Mary E. McCutcheon
 Nion T. McEvoy & Leslie Berriman
 Ms. Maureen McKeown
 Terry Mech
 Thayer Meicler
 Mr. Daniel J. Melvin
 Dr. & Mrs. David Menke
 Mr. Steve Merlo
 Sheila Merritt
 Mrs. Cecile Michael
 Michael Millman
 Mrs. & Mr. Ellen Monck
 Ms. Christine Morphopoulos
 Ms. Laurel Morris Wessler
 Mr. Jed Nachman
 Zanoon Nissar
 Mr. & Mrs. George P. Nolan
 Mr. Neil H. O'Donnell &
 Ms. Christine Motley
 Mr. & Mrs. Jay I. N. Patel
 Ms. Patricia E. Perry
 Drew & Cathleen Pienaar
 Rob & Heather Pietsch
 Mr. & Mrs. Charles A. Pilgrim, Jr.
 Mr. & Mrs. Martin Quinn
 Mr. Mark R. Reedy
 Debbie Rivard
 Jeremiah & Jacquie Robison
 Mr. Bryan Rogers
 Ms. Sandy Roller
 Ms. Natalie Rome
 Diane & George Romero
 James & Sandee Russell
 Mr. & Mrs. Tony Salewski
 Elijah Sandler
 Ms. Debra J. Saunders & Mr.
 Wesley J. Smith
 Dr. & Mrs. David M. Schaal
 ReQua & Kathryn Schultz
 Victoria Scott
 Mrs. Pamela Sebastian
 Mr. & Mrs. Robert E. Segale
 Ms. Anne Seymour
 Mr. & Mrs. Adam Shane
 Mr. & Mrs. Paul V. Simpson
 Ms. Karen F. Slater
 Mr. & Mrs. Hugh Smith
 Dr. J Spangenberg
 William & Lynn Starr
 Ms. Robin A. Sutton
 Ms. Shadya Takla
 Ms. Elaine Taylor &
 Mr. Russell M. Leiman
 Mr. & Mrs. Leon M. Traister

Ms. Jeanie Treichel
Mr. David Velleman
Ms. Gisele Verrier
Mr. Benjamin Viemeister
Sean Voisen
Mr. Stephen Waldman
Buzz & Donna Walling
Todd Wandell
Tamir Wardany & Family
Mr. & Mrs. Steve Warto
Erika Wasmund
Mr. Brian Wells &
Ms. Nina V. Washburne
Mr. Paul Wermer &
Ms. Carol Brownson
Mr. Stephen P. White
M. J. Whitehouse
Ms. Kathleen Wilson
Mr. & Mrs. Ralph R. Wolfe
Mrs. Constance B. Wright
Mr. & Mrs. David G. Wright
Ms. Lauren Wroblewski
Ms. April Yarahmadi
Dr. & Mrs. William Yarbrough
Michelle Zatlyn
Carl Zimmerman
Mr. Mark R. Zitter &
Dr. Jessica Nutik-Zitter

We are grateful for the generous support we receive from our community of donors. Each gift is an investment in families who are moving beyond poverty and building brighter futures. We strive to accurately report all gifts of \$500+ to Raphael House in this donor honor roll for the fiscal year August 1, 2016 – July 31, 2017.

Please accept our sincerest apologies for any inadvertent inaccuracies or omissions. Please contact Rob Taylor at 415.345.7263 or rtaylor@raphaelhouse.org to report any corrections to be updated in the digital version of this report. Thank you!

GET SOCIAL

Join the Change

Like us, Friend us, Share it...



RAPHAELHOUSEOFSANFRANCISCO



RAPHAELHOUSESF



@RAPHAELHOUSE



RAPHAEL-HOUSE





Raphael House
1065 Sutter Street
San Francisco, CA 94109
Phone: 415.345.7200
Fax: 415.345.7299

RAPHAELHOUSE.ORG